



How to create your fundraising page using *Penn Giving Pages*

Million Dollar Bike Ride
Sunday, May 20, 2018

Click the appropriate registration link for your disease team below

- [Angelman Syndrome](#)
- [A-T Children's Project](#)
- [Adult Polyglucosan Body Disorder](#)
- [Bike to End Duchenne](#)
- [Bike 4 Sight \(Retinal Blindness\)](#)
- [Castleman Disease](#)
- [CDKL5](#)
- [Chardan](#)
- [Choroideremia](#)
- [Congenital Hyperinsulinism \(CHI\)](#)
- [Congenital Muscular Dystrophy \(CMD\)](#)
- [Cystic Fibrosis](#) (Movin' for Mallory)
- [Dyskeratosis Congenita Outreach](#)
(Team Josh & the DCO Riders)
- [Fibrous Dysplasia](#)
- [Fibrodysplasia Ossificans Progressiva](#)
- [Friedreich's Ataxia \(FARA\)](#)
- [Lymphangiomyomatosis\(LAM\)](#)
- [Lymphangiomatosis & Gorham's Disease Alliance \(LGDA\) & Lymphatic Malformation Institute \(LMI\)](#)
- [Maple Syrup Urine Disease](#)
- [Mucopolidosis Type IV \(ML4\)](#)
- [Mucopolysaccharidosis\(MPS\)](#)
- [NBIA Disorders](#)
- [Niemann Pick Type C \(NPC\)](#)
- [Penn Scientists for Orphan Disease Research](#)
- [Pitt Hopkins](#)
- [RASopathies](#)
- [SMA](#)
- [Snyder-Robinson Syndrome](#)
- [Team Gene Spotlight](#)
- [Million Dollar Bike Ride General Fund](#)

“In celebration of a special event” → click “Go”

The screenshot shows the Penn GivingPages website interface. At the top, there is a navigation bar with the Penn GivingPages logo and a 'Log in' link. Below this is a large banner with the text 'Support what matters most!' and 'Penn GivingPages are the perfect way to raise awareness and monetary support for the kinds of medical research, education and care that matter the most to you. Get started now!'. The banner also features the Penn GivingPages logo and a background image of people's hands stacked together. On the left side, there is a 'Create a page...' section with four options, each with a 'Go' button. The 'Go' button for 'In celebration of a special event' is highlighted with a red box. A red arrow points from the main banner towards this button. Below the 'Create a page...' section, there are three columns: 'Recent pages', 'Search Pages', and 'FAQs'. The 'Recent pages' section shows a list of pages with thumbnails and titles. The 'Search Pages' section has a search bar and a 'Search' button. The 'FAQs' section contains questions and answers.

Create a page...

- In honor of someone special in your life. [Go](#)
- In celebration of a special event. [Go](#)
- In memory of a family member, friend, or loved one. [Go](#)
- Inspiring others to join you in your support of research at Penn Medicine. [Go](#)

Support what matters most!

Penn GivingPages are the perfect way to raise awareness and monetary support for the kinds of medical research, education and care that matter the most to you. Get started now!

Penn GivingPages

Recent pages

Result 1-5 of 179 Page 1 2 3 ... 34 35 36 Next

- Evelyn Jacobs Ortner Center on Family Violence
The Evelyn Jacobs Ortner Center serves as a vital resource for policy makers, agency directors,...
- Kyle Feinson
Fund for Pennsylvania Hospital NICU
- A Love for Life

Search Pages

Search Name and Description

[Clear](#) [Search](#)

Result 1-5 of 179 Page 1 2 3 ... 34 35 36 Next

PAGE	ORGANIZER
	2013 Pennsylvania Hospital ICN Reunion Gretchen Murphy

FAQs

Question: I can't remember the custom URL I chose for the page. Where can I find it?
Answer: You can find your custom URL by logging in to your page and then selecting "Edit My Page" tab at the top. In the upper right, there is an icon that says "Edit description and goals". When you click... more

Question: Do I have to create an account to build a page?
Answer: Yes. In order for us to save your

Fundraising information

Campaign name: *

Million Dollar Bike Ride

Description: *

Raising money for rare disease research

Target dollar amount: *

\$1,000,000.00

Number of donations hoped for:

1000

In celebration of: *

Rare Disease Research

Custom URL:

Enter a name with no spaces or special characters to be used in creating a quick link to your custom page such as "rememberingKate". Entering this name will allow you to use a simple url to access your page such as: <http://givingpages.upenn.edu/rememberingKate>

cureABCD

Private site:

Making your page site private will prevent anyone from finding it on this web site - people will only be able to reach it via the link custom URL that you enter above.

Fundraising event:

If this page is associated with an event, select this checkbox. Donors will be able to specify that they are participating in the event. Please note that any event fees will need to be handled separately to this website - only donations may be processed.

Campaign expiration date:

This is the date that your campaign will no longer appear to the public unless directly accessed through your custom URL.

Select a template: *

Left sidebar Right sidebar

Select a fund: *

Your disease team name

[More funds](#)

Cancel

Continue

Customize these fields as you wish to make the page your own

Write down your custom URL to access your page in the future

Do **NOT** check this box

Choose either

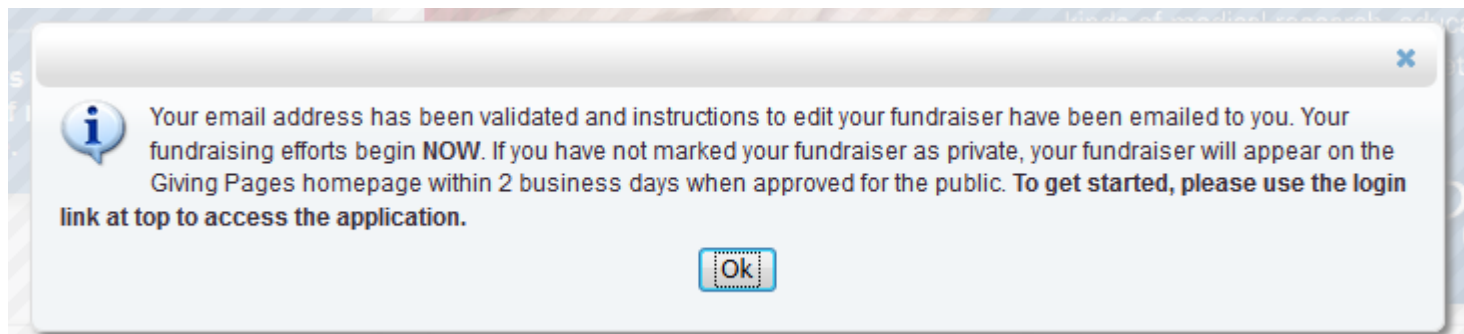
Your team name will automatically appear here

Click “**Continue**”

Then on the next screen, complete your personal information. Check “**I agree**” and click “**Register**”

The system will have sent a **confirmation link** to the email address you provided. Click on the link in the email you received. If you haven’t received the email, check your Spam folder.

You will then see this screen:



Million Dollar Bike Ride for Orphan Disease Research Fund

Enter donation by check Edit description and goals Edit editing

Donate Now!

Hide this Edit image



Caption your image here.

Enter your campaign title here.

Hide this Edit title

Hide this Edit image and paragraphs

Talk about your cause
 This is where you write more about your cause and why it's important for people to support you. You can write as much or as little as you want to discuss why your campaign is so important. To clear these instructions to add your own words, select "Clear text" to the left. All hyperlinks typed into text, such as <http://www.pennmedicine.org> or www.pennmedicine.org will be automatically linked upon saving.

This is a second paragraph header
 If you would like to write more about your cause, you can use these paragraphs and headers to expand on your ideas. If you'd like to include more than two paragraphs, just click "show" below next to Text block #3 and write more. If you'd like to only include one paragraph, you can choose "hide" next to Text block #2 above and to the left.

Third paragraph header
 Use this space to continue to tell your story and encourage your friends and family to support you.

Hide this Edit callout box

Hide this Edit video



If you have a video you'd like to include, please provide the link.

Use this space to highlight the most important facts about your campaign

In the list items below, use a few action words to describe why your campaign matters at a glance. These are helpful to drive home why your fund matters. You can include as many or as few items as you wish. You can also list suggested donation levels for your campaign, or benefits of donating. Some examples are below:

- Single Walker
- Group of 5 Walkers
- Total deaths from diabetes are projected to rise by more than 50% in the next 10 years.
- Heart Disease is the Leading Cause of Death in America
- There are more than 100 types of oamcers; any part of the body can be affected.
- \$25
- \$100
- All donors will receive a t-shirt
- 100% of your donation is tax-deductible
- Penn Medicine is the #1 Hospital in the Region

Hide this Edit slideshow

Donation messages

Hide this Edit donation messages

Help us get started by donating!

Here is where the fun begins!

Log in with your username and password.

Click "Manage my page" on the top right corner. Then, click "Edit [Campaign name]" to get started.

You can customize any of these fields as indicated.

Be creative and personalize your giving page.

Then spread the word and start fundraising!